

The Oak

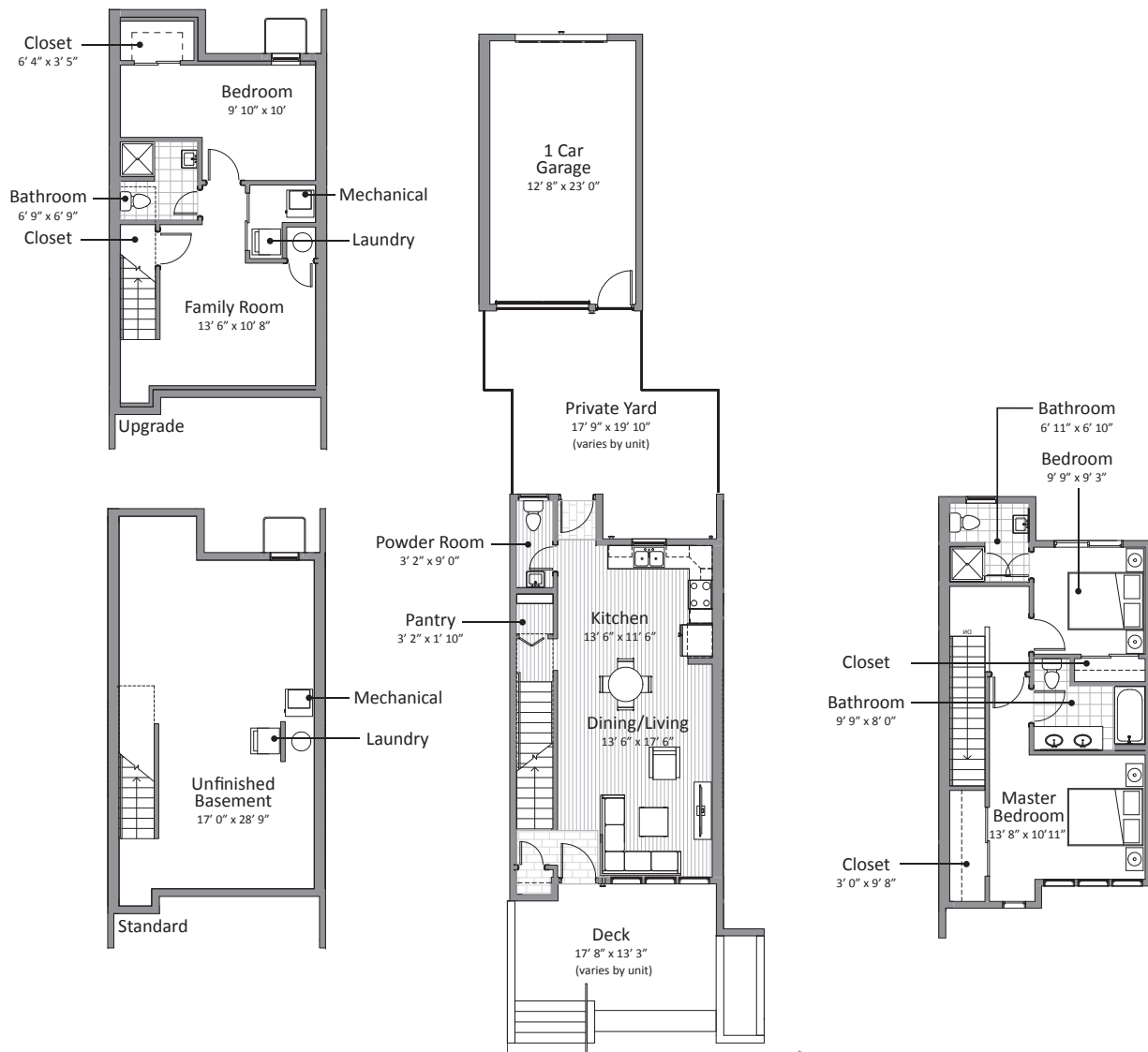


1,168 SF - 2 Bed, 2.5 Bath

- + 576 SF Unfinished basement
- + 293 SF 1 Car (oversized) detached garage
- + 292 SF Private back yard (approximate size; varies by unit)

Standard Flooring Key:

- Entry Tile
- Hardwood
- Carpet
- Vinyl Plank



* Architectural plans, dimensions, square footage, elevation, and floor plans are approximate and are subject to change without notice.



The Oak with extra Parking

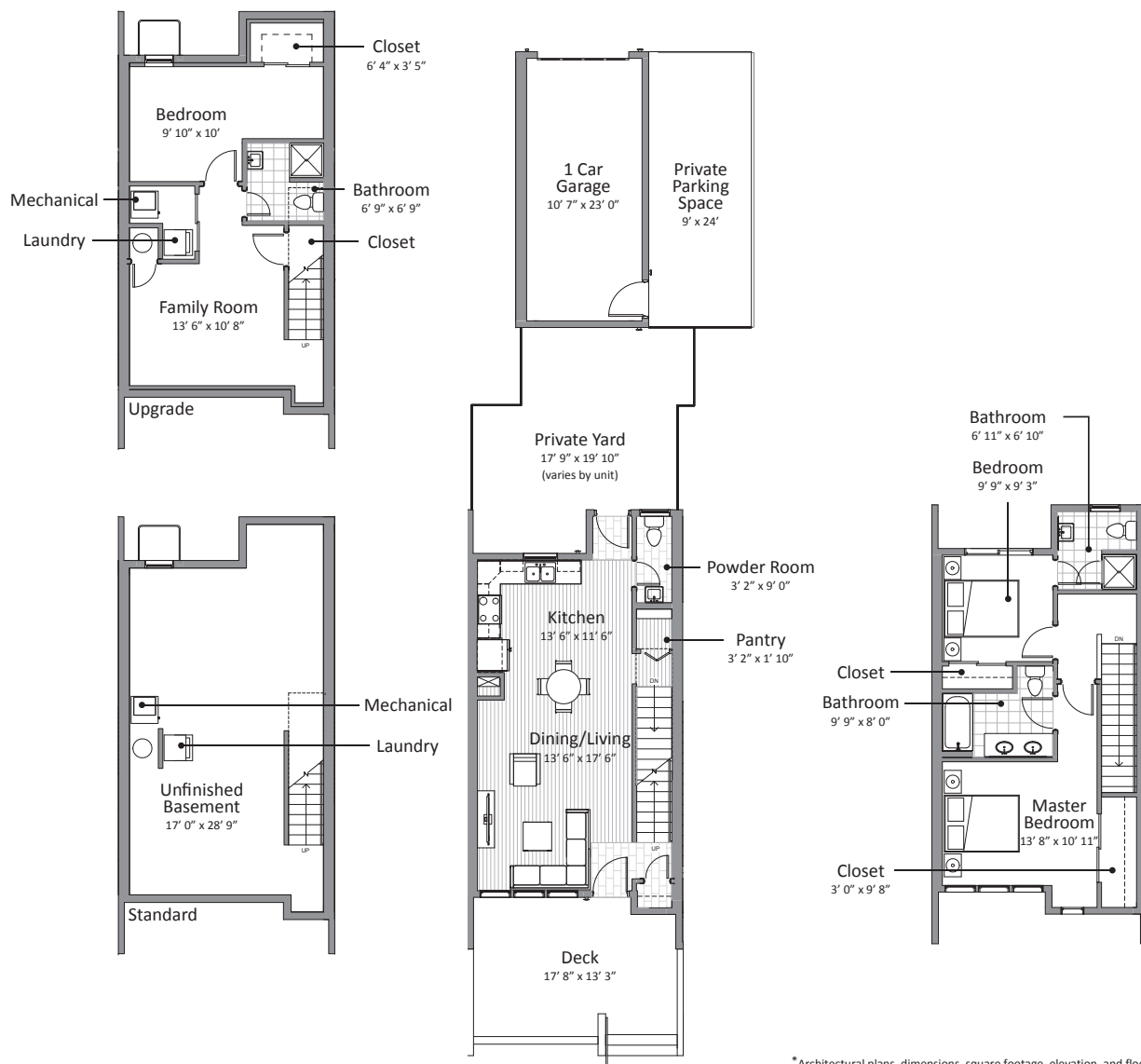


1,168 SF - 2 Bed, 2.5 Bath

- + 576 SF Unfinished basement
- + 271 SF 1 Car detached gfarage
- + 1 Parking space
- + 233 SF Private back yard (approximate size; varies by unit)

Standard Flooring Key:

-  Entry Tile
-  Hardwood
-  Carpet
-  Vinyl Plank



*Architectural plans, dimensions, square footage, elevation, and floor plans are approximate and are subject to change without notice.

